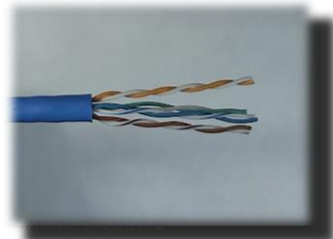
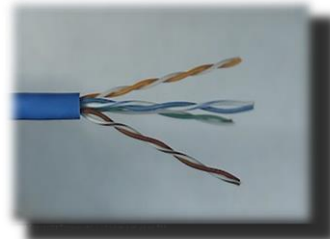


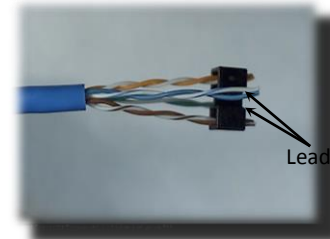
1. Plug Housing with Pair Separator and Front Load bar. B00065L strain relief shown.



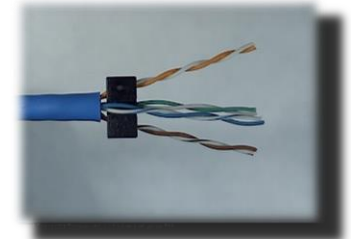
2. Put Strain Relief onto cable ends. Strip jacket approximately 1.25 inch / 31.75mm



3. Fan out pairs per 568-B color code.



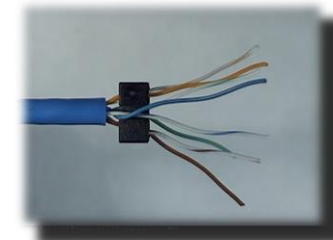
4. Insert Orange and Brown pairs into separator holes. Lead-in of separator center pairs points forward.



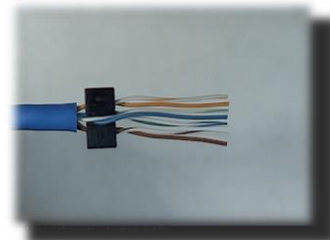
5. Push pair separator back to cable jacket.



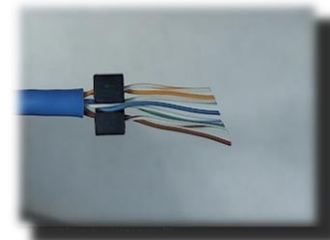
5A. NOTE: Center pair colors change position depending on the cable end being terminated.



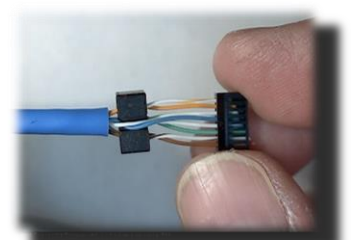
6. Untwist wires back to pair separator.



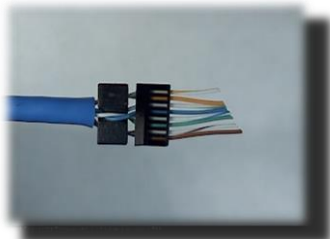
7. Straighten wires into proper order.



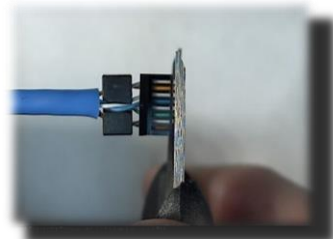
8. Cut wires at an angle to prepare for front load bar.



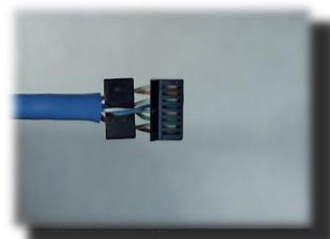
9. Insert front load bar onto angled wires. Angle of load bar up as shown.



10. Push load bar back to the pair separator. Small gap is allowed.



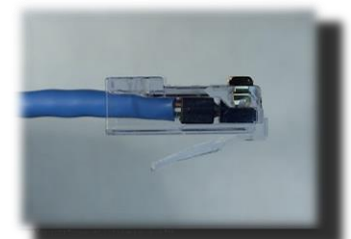
11. Cut wires flush with the front load bar.



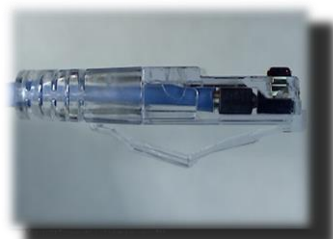
12. Pull front load bar forward off the wires slightly to aid them bottoming into the plug housing.



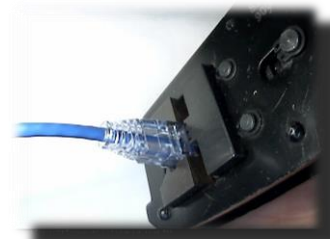
13. Insert prepped cable into plug housing. Bottom fully.



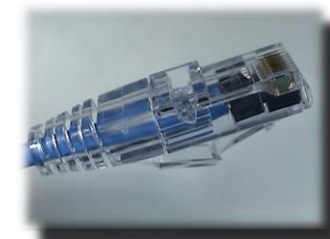
14. Side view showing the prepped cable fully bottomed into the plug housing.



15. Push strain relief insert fully into the back of the plug body.



16. Terminate Plug. Contact height to be .237 +/- .005 inch after termination.



17. Finished termination shown with Strain Relief.