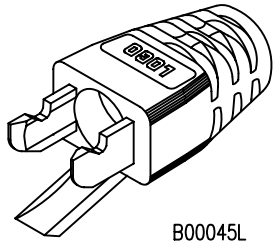
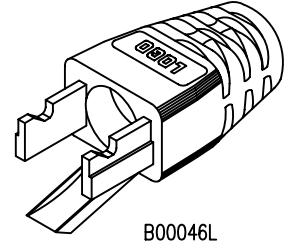


Sentinel Connector Systems Inc.

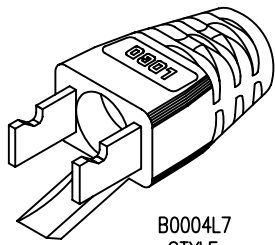
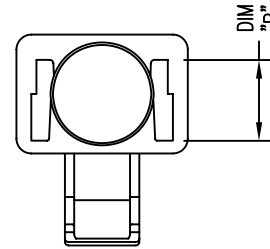
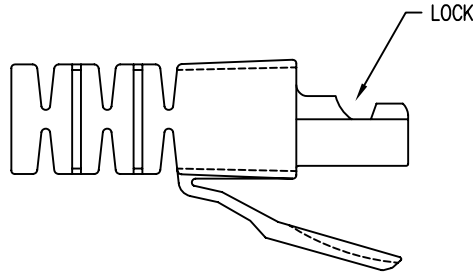
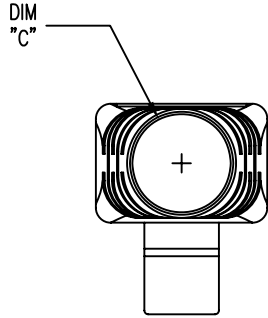
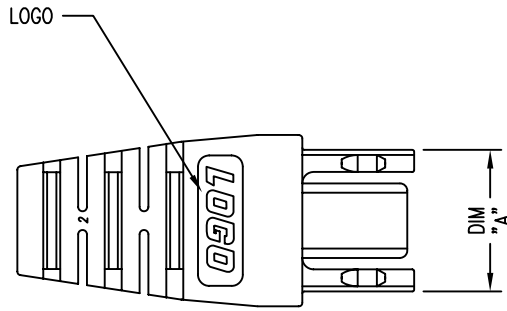
1953 Stanton Street
York, Pa. 17404



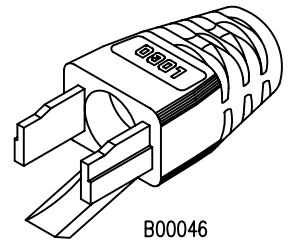
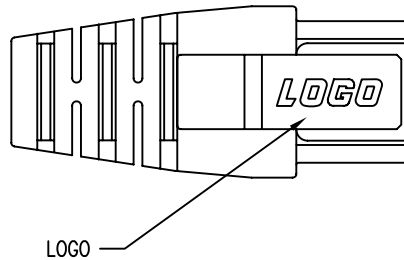
B00045L
STYLE



B00046L
STYLE



B00047L
STYLE



B00046
STYLE

PART NO.:	DIM "A"	DIM "B"	DIM "C"	LOGO TAB	LOGO TOP	LOCK	SAME AS, EXCEPT	SHLD/UN	DESIGN FOR
B00044L	.380	.187	.265	?	LEVITON	YES	B00046L	UNSHLD	LOAD BAR
B00044L2	.380	.187	.236		LEVITON	YES	B00046L	UNSHLD	LOAD BAR
B00045L	.320	.220	.265		SENTINEL	YES	AS DESIGNED	UNSHLD	106 (5E)
B00045LS	.320	.220	.265		SENTINEL	YES	B00045L	SHIELDED	106 (5E)
B00046	.380	.187	.265		SENTINEL	NO	AS DESIGNED	UNSHLD	LOAD BAR
B00046S	.380	.187	.265		SENTINEL	NO	B00046	SHIELDED	LOAD BAR
B00046L	.380	.187	.265		SENTINEL	YES	AS DESIGNED	UNSHLD	LOAD BAR
B00046LS	.380	.187	.265		SENTINEL	YES	B00046L	SHIELDED	LOAD BAR
B00047L	.320	.175	.265		SENTINEL	YES	AS DESIGNED	UNSHLD	110 (RAD BK)
B00047LS	.320	.175	.265		SENTINEL	YES	B00047L	SHIELDED	110 (RAD BK)
B00049L	.380	.187	.265		NONE	YES	B00046L	UNSHLD	LOAD BAR